



C. NELSON Manufacturing Company
www.cnelson.com ... sales@cnelson.com
419-898-3305 x 201

Pushcarts



Model BDC8, BDC8-NCP & BDC8-NR

Capacity 9 cu.ft., Approx 800 Novelties, or 10 3-gal tubs, Cold Plates Standard, 1/3 h.p., 6 amps., 115 volts, R290 refrigerant.

With Cold Plates: Hold temp -9 degrees. Requires a 24 hour charge from warm state with a 10 hour hold. Requires a 12 hour re-charge after 10 hours use.

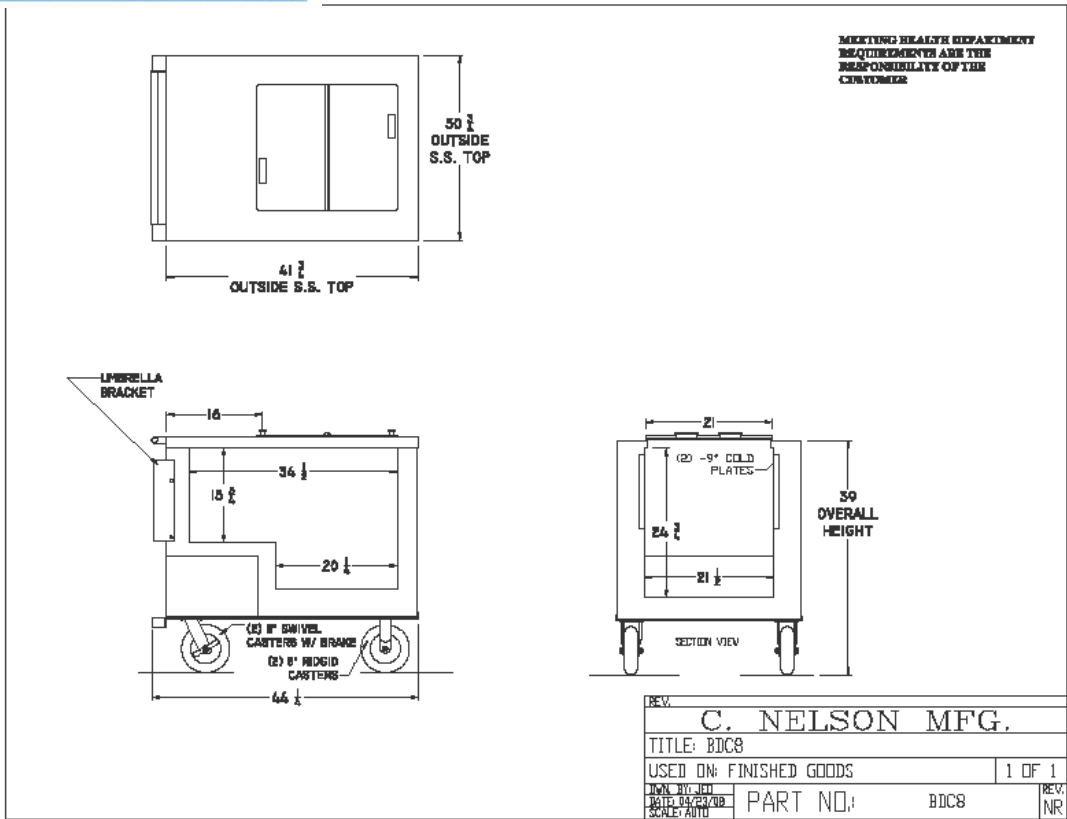
BDC8_NCP - No Cold Plates. Requires electricity or use with our re-freezeable cold packs (sold separately).

BDC8_NR - No refrigeration. For use with dry ice, wet ice or our re-useable cold packs

Specifications

- *Lid locks standard on all models.
- *Top to be 18 ga. type 304 stainless.
- *Base frame to be welded aluminum.
- *All exposed corners welded and polished smooth.
- *Finished exterior to be white Lexan, standard.
- *Wheels to be 6" or 8" diameter (2) swivel w/locks, (2) rigid. Load rating of wheel to min of 350 pounds ea.
- *Interior of cart to be 24 ga. stainless.
- *Bottom drain for defrost.
- *Condensing unit on glide-out base with service valves.
- *Carts to have 5 yr. ltd warranty for cold plate failure, insulation failure or internal tubing leaks.
- *NSF & ETL listed for outdoor use.
- *Options available include; custom artwork panels, umbrella, overhead awnings, fold-down shelf, bicycle wheels, sand wheel axels, custom graphics and more





INSTRUCTIONS: DO NOT ADJUST THERMOSTAT IN COLDPLATE MODELS.
 From a warm state, plug the cart into a standard 110 outlet 24 hours before an event. The cart will run at -20 to fully freeze the walls/coldplates. Simply unplug for up to 10 hours use. Cart then requires a 12 hours re-charge (plug in) to hold another 10 hours. It will not damage the cart to keep it plugged in while stored, but the cart does need air circulation when plugged in.
 Note: If you are scooping a product, store the product in a different freezer while the cart is charging.



www.cnelson.com
E-mail: sales@cnelson.com
419_898_33005 x201
Oak Harbor, OH 43449 USA



CLT4-W & CLT4-NR Models

Nelson Carts for Catering, Concessions, Party Rental, and Special Events

A perfect choice for professionals and upstart companies for ice cream or Italian ice dipping anytime, anywhere



CLT carts deliver the performance of Nelson carts in a compact, lightweight and inexpensive package. Ideal for the smaller catering jobs where a less durable piece of equipment is required.

CLT Models available with no refrigeration, great for use with Italian Ice or for use with our re-useable cold plates. OPTIONS: Beach Wheel Axels, Sneeze Guard, Graphics, Cold packs. Extended handlebars & more

MADE IN THE U.S.A.

Shown Top: CLT4-NR with optional sneeze guard and graphics.

Shown Bottom: CLT4-W with optional graphics



www.cnelson.com
 E-mail: sales@cnelson.com
 419_898_33005 x201
 Oak Harbor, OH 43449 USA

