

C. NELSON MFG. CO., INC. ...2 65 N. LAKE WINDS PKWY.  
OAK HARBOR, OH 43449 ... 419-898-3305 X 201  
WWW.CNELSON.COM ... SALES@CNELSON.COM



## *HAPPY HANDS FREE HAND WASHING SPA*

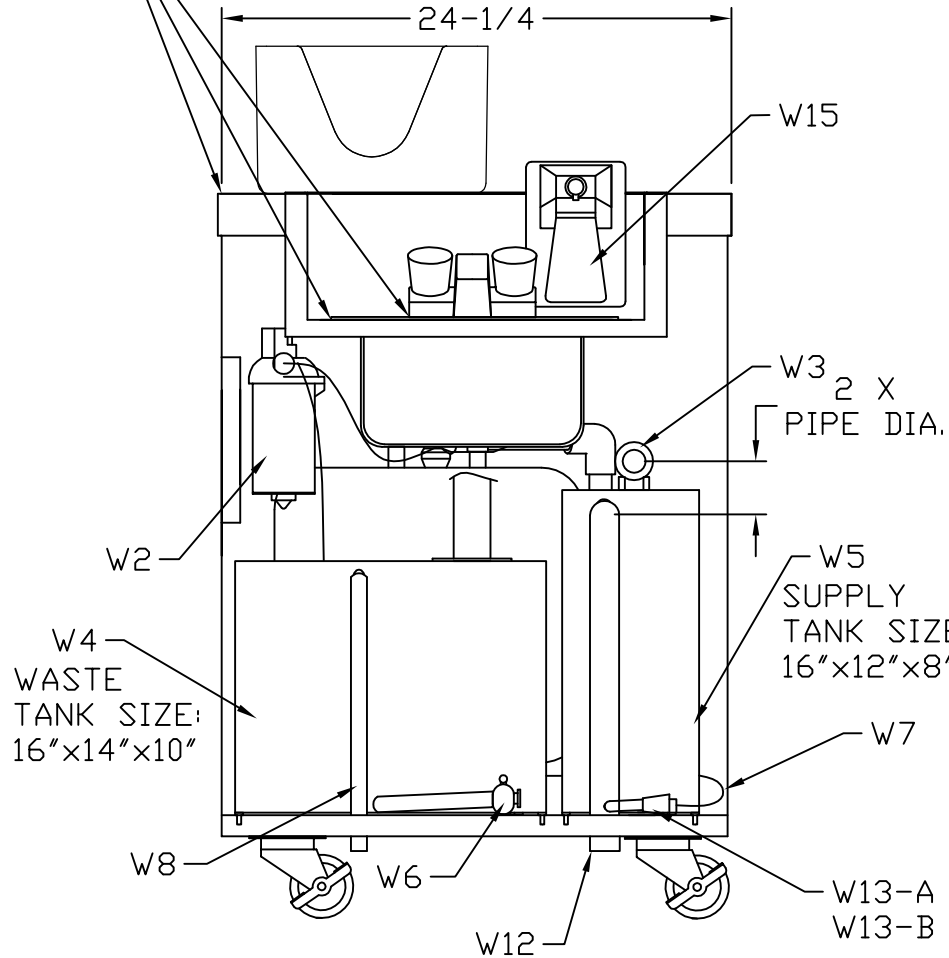
NSF SINK SYSTEM SPECIAL \$2450 EA PLUS SHIPPING  
Stand alone hand washing station approved by the National Sanitation Foundation. Totally self-contained, powered by a 15 amp standard electrical outlet. Includes a fresh water tank, a waste water tank, a pressure pump, an on-demand hot water heater, paper towel and soap dispenser, on casters and light weight.

In a time when the importance of practicing good hand washing technique has taken over the media headlines, you need to be prepared. We can help.



MAT'L: SEE PARTS LIST  
QTY. SEE PARTS LIST

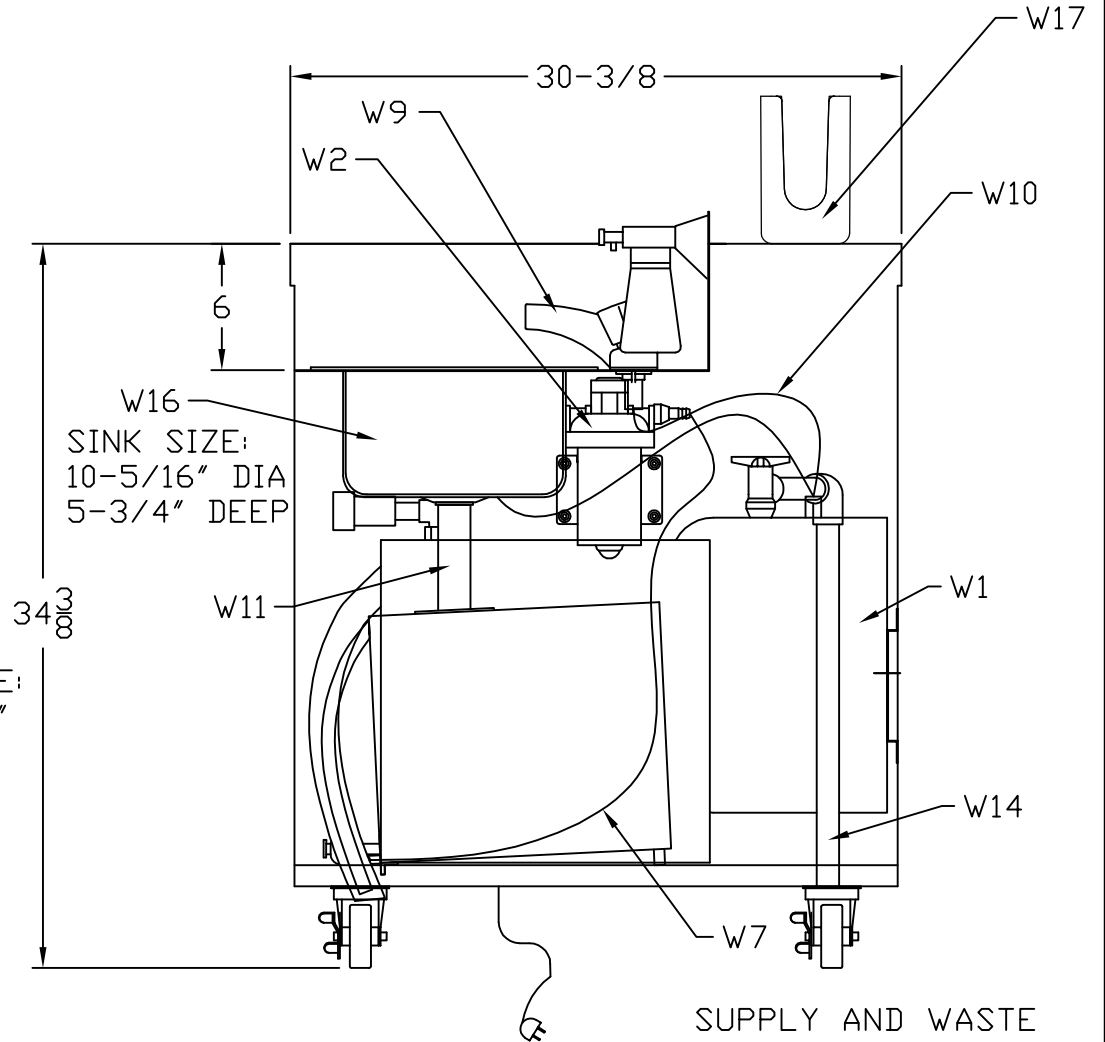
CAULK ALL ASSEMBLY JOINTS WITH SILICON  
ADHESIVE G.E. RTV108 12C OR EQUIVALENT



DOOR AND EXTERIOR  
REMOVED FOR  
CLARITY

DRAIN TO WASTE TANK IS REMOVABLE WITHOUT TOOLS.  
ALLOWING TANK TO BE REMOVED WITHOUT TOOLS.  
THIS ALLOWS THE FRESH WATER TANK TO  
BE PULLED FORWARD DICONNECTED AND REMOVED WITHOUT  
TOOLS.

ALL OVERFLOW OPENINGS COVERED WITH  
STAINLESS WIRE MESH



END VIEW  
EXTERIOR REMOVED  
FOR CLARITY

SUPPLY AND WASTE  
TANKS SHOWN  
TRANSPARENT FOR  
CLARITY

"F" 05/26/16 PAC ADDED SIZE NOTES TO CLARIFY

REV.

C. NELSON MFG.

TITLE: CA SINK

USED ON: VARIOUS CARTS

1 OF 2

DWN. BY: PAC

DATE: 03/01/04

SCALE: AUTO

PART NO.: 98043-A-R6

REV.

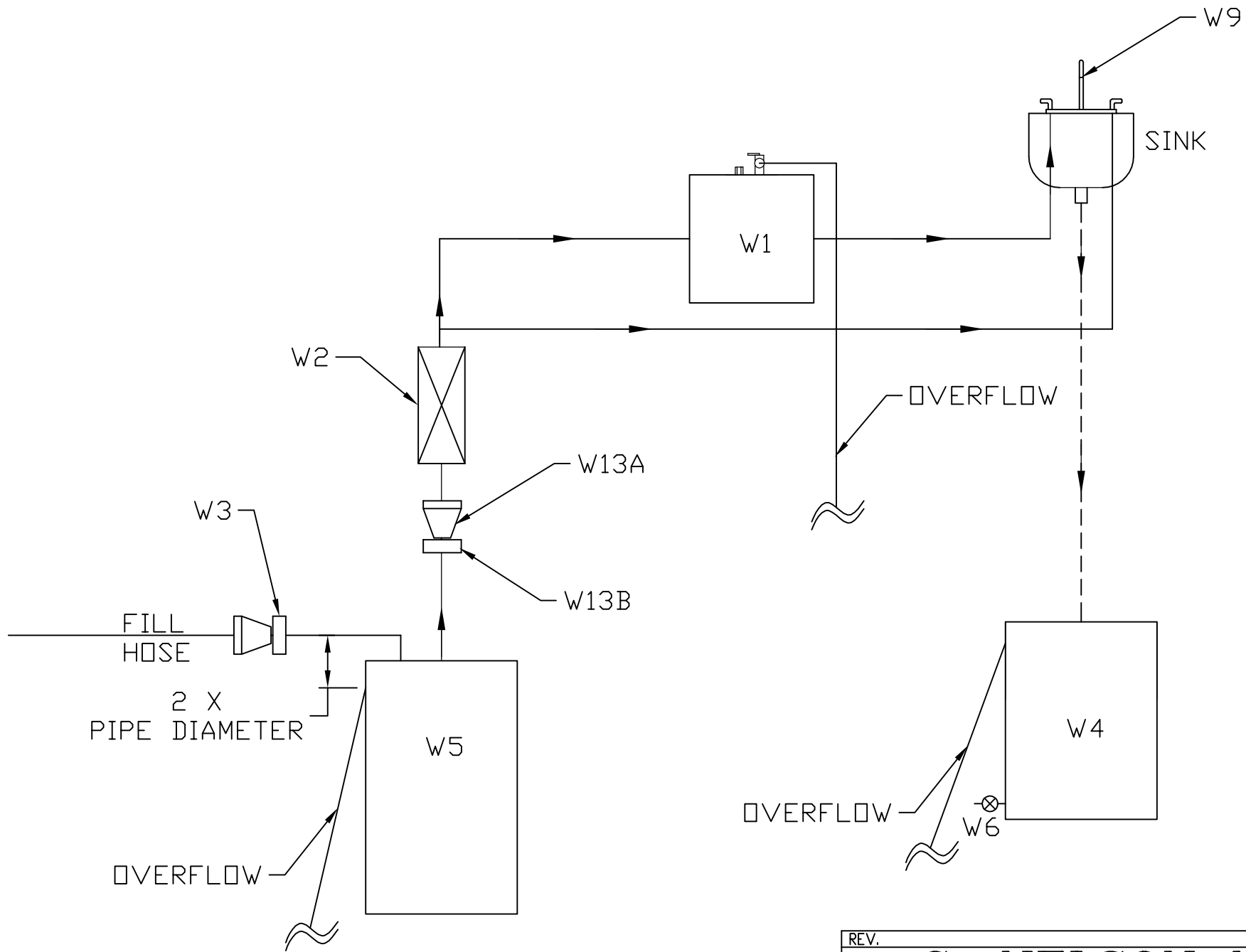
F

**98043-A-R6 BOM STYLE**

USED ON: STD SINK

ITEM #	QTY	P/N	DESCRIPTION	MANUFACTURER	MFG MODEL	LISTINGS
W1	W1	YS0010	WATER HEATER 2-1/2 GALLON	BOSCH	TRONIC 3000T	UL
W2	1	YZ2071	WATER PUMP	SHURflo	8025-733-256	UL,NSF
W3	1	YZ2037	FRESH WATER INLET QUICK CONNECT	HANSON	4HK	NSF
W4	1	YZ0382	(9) GALLON WASTE WATER TANK	PLATIC MART	R-RVB132	NSF
W5	1	YZ0381	(5) GALLON CAPACITY FRESH WATER TANK	PLASTIC MART	R-RVB277	NSF
W6	1	YP0260	SHUT OFF VALVE	McMASTER CARR	4876K41	NSF
W7	**	YZ203301	PUMP SUPPLY TUBING 3/8" ID	KURIYAMA	K3150-06	NSF
W8	**	YZ203302	WASTE WATER OVERFLOW/FAUCET SUPPLY 1/2" ID	KURIYAMA	K3150-08	NSF
W9	1	YZ0356	FAUCET	GLOBE UNION	F4ZZ18CP-JPB3	NSF
W10	2	YZ0363	CONNECTIONS LINES	SHURflo	181-201	NSF
W11	1	YZ0365	TAILPIECE	GENOVA	138061	
W12	1	YZ2032	FRESH WATER OVERFLOW 1"REINFORCED TUBING	KURIYAMA	K3150-16	NSF
W13-A	1	YP0560	QUICK CONNECT W/SHUTOFF ACETIL	COLDER PRODUCTS	21400 PLCD22006 NSF	NSF
W13-B	1	YP0550	QUICK-CONNECT IN LINE W/SHUTOFF ACETAIL	COLDER PRODUCTS	20800 PLCD17006 NSF	NSF
W14	1		HOT WATER OVERFLOW PVC PIPE			
W15	1	YZ0347	SOAP DISPENSER	McMASTER CARR	2950K61	
W16	1	YZ03519	NSF/UL SINK BOWL 201260 SS RD	POLAR WARE	201260	NSF
W17	1	YZ034702	COUNTERTOP FOLDED TOWEL HOLDER	U-LINE	H-2335	
1	2	YZ2004	OUTDOOR DUPLEX BOX	HUBBLE	5958-0	UL,CSA
2	1	YE02341	DUPLEX RECEPTACLE GFI TYPE	LEVITON	7899-A	UL,CSA
3	1	YE02340	SWITCH/RECEPTACLE	LEVITON	5320-ICP	UL,CSA
4	1	YE0210	JUMPER CORD	14 GA WIRE		UL
5	1	YZ1015	FLEXIBLE CONDUIT	SUPERFLEX LTD	8451	UL,CSA
6	1	YE011003	SJTOOW 14/3 CORD WITH MOLDED PLUG	MID-STATE MFG CORP		UL,CSA
7	7		304 SS CONSTRUCTION	C. NELSON MFG		
8	4	YC0117	4" SWIVEL CASTERS W/BRAKE	JARVIS	4-30-314GF-2BRK	NSF

\*\* QTY AS NEEDED



SELF CONTAINED WATER SUPPLY SCHEMATIC

REV.	
C. NELSON MFG.	
TITLE: SINK FLOW DIAGRAM	
USED ON: MODEL SINK FLOW	
DWN. BY: PAC	PART NO.: 408
DATE: 08/06/13	
SCALE: AUTO	
REV.	

WATER TANK

MATERIAL  
CERTS

# HYPEL

C. NELSON

HYPEL™ LLDPE 3170 UV 8 NATURAL\*\*  
LINEAR LOW DENSITY POLYETHYLENE, 7.0 MFI

### TYPICAL PROPERTY VALUES†

<u>PROPERTY</u>	<u>METHOD</u>	<u>UNIT</u>	<u>VALUE</u>
<b>PHYSICAL</b>			
Specific Gravity	ASTM D792	-	0.935
Melt Flow (190 °C / 2.16 kg)	ASTM D1238	g/10 min	7.0
<b>MECHANICAL@ 73°F</b>			
Tensile Strength at Yield	ASTM D638	psi MPa	2,720 18.8
Flexural Modulus – 1 % Secant	ASTM D790	psi MPa	100,000 655
ARM Impact 1/8" (Notched) @ -40°C	ASTM D562B	ft-lb/in	79
Hardness (Shore D)	ASTM D785	-	-
<b>THERMAL</b>			
264 psi – ASTM, 1.80 MPa – ISO	ASTM D648	°C °F	35 95
66 psi – ASTM, 0.45 MPa – ISO	ASTM D648	°C °F	52 125
<b>OTHER</b>			
ESCR (100% IGEPAL)			>1000

\*\*When used unmodified for food contact applications, this copolymer will comply with the U.S. Food and Drug Administration Food Additive Regulation 21 CFR 177.1520(c)3.1a. This section does not include use in packing or holding food during cooking. This product is limited to use in contact with food only under the conditions of use C through H described in table 2 of Sec. 176.170(c), and when contacting fatty foods of Types III, IVA, V, VII-A, and IX described in table 1 of Sec. 176.170(c), the finished articles are to have a volume of at least 18.9 liters (5 gallons). The uses cited are subject to good manufacturing practices and any limitations, which are part of the regulations. The regulations should be consulted for complete details.

†The data listed here fall within the normal range of product properties, but they should not be used to establish specification limits or used alone as a basis for design. This information is not intended as a warranty of any kind. Buyers must make their own representative test and assume all risks of use, whether used alone or in combination with other products. Entec Polymers, LLC assumes no obligation or liability of any advice furnished by it or results obtained with respect to these products. All warranties expressed or implied including warranties of merchantability for a particular purpose or use are excluded and disclaimed. Entec Polymers, LLC assumes no liability for use of products in infringement of any patent. The foregoing limitation of remedy and exclusion of liability is reflected in and is part of the consideration for the price, at which the products are sold by Entec Polymers, LLC. All data displayed herein has been obtained via testing of injected molded specimens of natural color. Pigmentation may affect certain properties to various degrees.



**ENTEC**  
ENGINEERED RESINS



ISO 9001 – 2000  
Certified

[← PREVIOUS PRODUCT](#)

[NEXT PRODUCT →](#)

[Home](#) . [Products](#) . [Shurflo® Electric Pumps](#) . [Shurflo® 8000 Series Delivery Pump](#)

## SHURFLO® 8000 SERIES DELIVERY PUMP 8025-733-256

### ▼ DESCRIPTION

Shurflo 8000 Series Delivery Pumps are ideal for applications that require high pressure with flow rates up to 1.5 GPM [5.7 LPM] and low amp draw. They can be mounted in any position, are compact and designed for long, trouble-free life. Spherically-shaped valves and diaphragms are available in a variety of materials to meet a wide range of applications.

### ► FEATURES

### ▼ SPECIFICATIONS

8025-733-256

VIEW 1 





**Electric Mini Tank  
Water heaters**

**GL 2.5 - GL 4 - GL 6+**

# IMPORTANT SAFETY INSTRUCTIONS

## **WARNING**

When using electrical appliances, safety precautions to reduce the risk of fire, electric shock or injury to persons should be followed, including:

1. **READ ALL INSTRUCTIONS BEFORE USING THIS WATER HEATER.**
2. This water heater must be grounded. Connect only to properly grounded outlet. See "GROUNDING INSTRUCTIONS" found on "INSTALLATION INSTRUCTIONS".
3. Install or locate this water heater only in accordance with the provided installation instructions.
4. Use this water heater only for its intended use as described in this manual.
5. Do not use an extension cord set with this water heater. If no outlet is available adjacent to the water heater, contact a qualified electrician to have one properly installed.
6. As with any appliance, close supervision is necessary when used by children.
7. Do not operate this water heater if it is not working properly or if it has been damaged or dropped.
8. This water heater should be serviced only by qualified service personnel. Contact a service person for examination, repair or adjustment.
9. Any water heater should be installed in such a manner that if it should leak, the resulting flow of water will not cause damage to the area in which it is installed. National Plumbing codes require a drain pan for any water heater installation. Failure to install one is the sole responsibility of owner and/or installer. Reference UPC 2000 (Uniform Plumbing Code) Section 510 - Protection from Damage or IPC 200 (International Plumbing Code) Section 504- Safety Devices.

# KEEP THESE INSTRUCTIONS AT HAND SAVE THESE INSTRUCTIONS

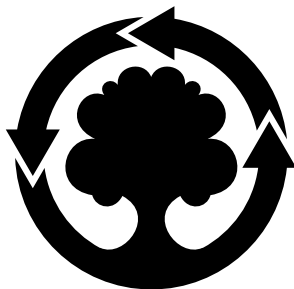
## **Technical data**

MODEL		GL 2.5	GL 4	GL 6+
Capacity	gallons	2.75	3.85	7.0 (Hor) / 5.1 (Vert)
Voltage	Vac	110/120 for each model		
Power at 120 Vac	Watts	1500	1500	1500
Maximum Water pressure	psi	150	150	150
Weight	Lbs	15.5	17.3	29.5
Amperage	Amps	12.50 for each model		
Phases		1	1	1

## **WARNING**

The installer should review the contents of this manual with the owner upon completion of installation, and the manual should be left with the owner and placed in a location close to the installation.





**MTS MAKES USE OF  
RECYCLED PAPER**



**6K88 LISTED**



**MTS**  
**GROUP**

**Merloni TermoSanitari SpA**

Viale Aristide Merloni, 45  
60044 Fabriano (AN)  
Tel. 0732.6011  
Telefax. 0732.602331  
<http://www.mtsgroup.com>  
E-mail: [marketing@it.mtsgroup.com](mailto:marketing@it.mtsgroup.com)

**BBT North America Corporation**  
Bosch Group

Bosch Water Heating  
340 Mad River Park  
Waitsfield, VT 05673  
Telephone 800-642-3111  
Fax (802) 496-6924  
[techsupport@boschhotwater.com](mailto:techsupport@boschhotwater.com)



The Public Health and Safety Organization

## NSF Product and Service Listings

These NSF Official Listings are current as of **Wednesday, September 26, 2018** at 12:15 a.m. Eastern Time. Please [contact NSF International](#) to confirm the status of any Listing, report errors, or make suggestions.

Alert: NSF is concerned about fraudulent downloading and manipulation of website text. Always confirm this information by clicking on the below link for the most accurate information:

<http://info.nsf.org/Certified/food/Listings.asp?Standard=059&Company=07400&>

---

### NSF/ANSI 59 Mobile Food Carts

---

#### C Nelson Manufacturing Co.

265 North Lake Winds Parkway

Oak Harbor, OH 43449

United States

419-898-3305

[Visit this company's website \(http://www.cnelson.com\)](http://www.cnelson.com)

**Facility :** Oak Harbor, OH

#### C-Series (Prepackaged Food) Ice Cream Pushcart[1] [2] [3] [4]

C(xxyy)(1)-(2)

##### [1] Basic C-Series Pushcart:

(xxyy) Indicates length x width of top in inches

(1) Indicates refrigeration configuration

R - Refrigerated

I - Insulated

(2) May be followed by one or more of the following suffixes:

CP - Built-in cold plates

D - Cash drawer

H - Optional built-in handwashing sink

S - Shelf

U - Optional umbrella

X - Optional built-in extension

[2] Unit is not intended for food preparation.

[3] Unit is not intended for potentially hazardous foods.

[4] Indoor or outdoor use acceptable.

#### Ice Cream Cart

BDC8

BDC4

BDC6

BDC8S

BDC8RC

#### Mobile Handwashing Sink[5] [6] [7]

N98043-(1)-(2)

[5] NSF Certified production beginning with serial number 0516701.

[6] (1) Suffixes include:

A - Attached to NSF Certified unit (AA, AB or AC family) without modification

C - Attached to NSF Certified unit (AA, AB or AC family) with a common top surface

M - Stand alone unit

(2) Suffixes include:

R4 - 4" recess top

R6 - 6" recess top

[7] Optional accessories may include soap dispenser and paper towel holder.

#### Mobile Food Cart[5] [8]

NJJ326

NJJ346

[5] NSF Certified production beginning with serial number 0516701.

[8] Cart is Certified for:

End use - non-potentially hazardous foods

Not intended for food preparation

Indoor or outdoor use

#### Churro/Pretzel Mobile Food Cart[9]

PW325-(xxyy)-S

[9] Where xxyy represents length x width.

Number of matching Manufacturers is 1

Number of matching Products is 10

Processing time was 0 seconds