



C. NELSON MANUFACTURING COMPANY, INC.
 WWW.CNELSON.COM .. SALES@CNELSON.COM
 OAK HARBOR, OH 43449 SINCE 1898

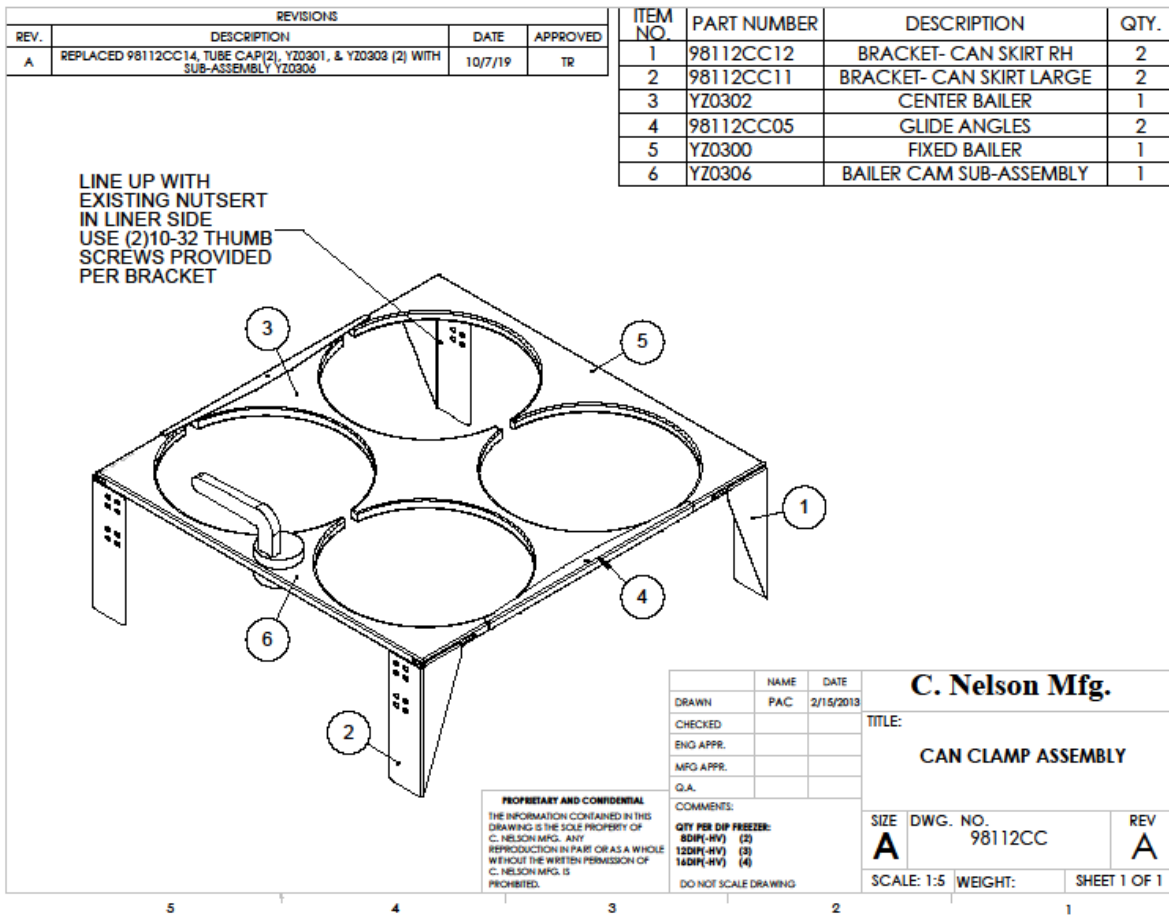
NELSON CAN CLAMP SYSTEM ASSEMBLY INSTRUCTIONS

Line No	Component ID	PARTS INCLUDED FOR ONE SET TO HOLD 4 TUBS	Usage Qty	UM
10	N98112CC05	(C) GLIDE ANGLE, 98112-CC CAN CLAMP KIT (CAN-CLAMP-KIT-01EM)	2	EA
20	N98112CC11	(C) BRACKET RH, 98112-CC, CAN CLAMP KIT (98112CC11-12X55EM)	2	EA
30	N98112CC12	(C) BRACKET LH, N98112-CC, CAN CLAMP KIT (98112CC11-12X55EM)	2	EA
40	YZ0306	CAN CLAMP KIT - BAILER CAM SUB-ASSEMBLY	1	EA
50	YZ0300	CAN CLAMP KIT - BAILER FIXED, 1/2" HDPE WHITE	1	EA
70	YZ0302	CAN CLAMP KIT - BAILER CENTER, 1/2" HDPE WHITE	1	EA
100	ZF1943	10-32 SS THIN NYLON INSERT HEX PK=50 90101A225	0.04	EA
110	ZF2869	10-32 X 3/4 PHIL TRUSS MS SS 91770A831 PK=100	2	EA
120	ZF287201	10-32 X 3/8" BRASS THUMB SCREW 92421A640 PK=25	8	EA



COMPLETED INSTALLATION
 OF (3) SETS LISTED ABOVE
 AS SHOWN IN NELSON
 MODEL 12DIPHV

CAN CLAMP KITS CAN BE
 USED WITH MOST 3-GALLON
 ROUND ICE CREAM CON-
 TAINERS



1. ARRANGE WHITE WIRE FOR TUB RISER IN THE DEEP END OF YOUR CABINET. YOU CAN STORE A TUB OF PRODUCT UNDER EACH RISER OR NOT. THE RISER HOLDS THE TOP TUB UP TO THE FREEZE LINE (RED TAPE).
2. INSTALL WALL BRACKETS PART NUMBERS 1 & 2. LINE UP WITH EXISTING NUTSERTS IN LINER SIDE. USE (2)10-32 THUMB SCREWS PROVIDED PER BRACKET.
3. SLIDE PART NUMBERS 5 & 6 ONTO THE WALL BRACKETS.
4. INSTALL PART NUMBER 3, CENTER BAILER, BY LINING UP WITH PART NUMBER 4, THE GLIDE ANGLES. CLAMP TUBS BY TURNING THE HANDLE THE OPPOSITE WAY. TO FILL OR RE-FILL CABINET, TURN THE HANDLE TO RELEASE AND REMOVE CENTER BAILER.