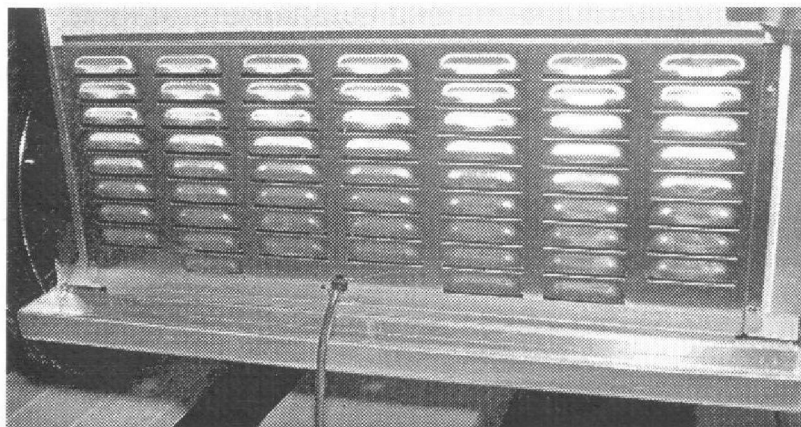
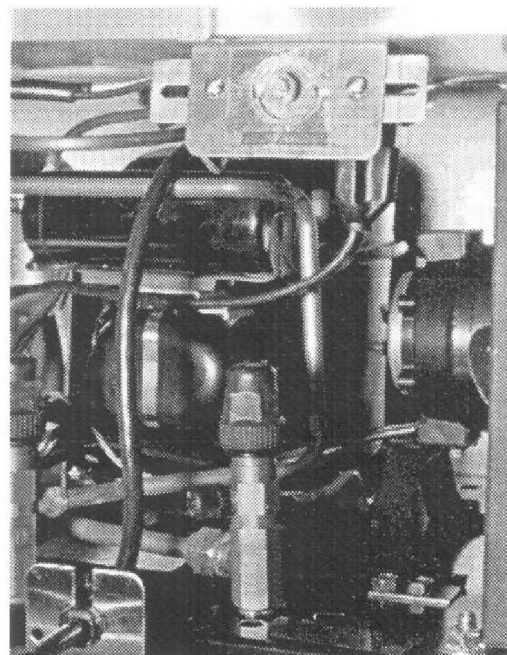


Instructions for Temperature Control Adjustment

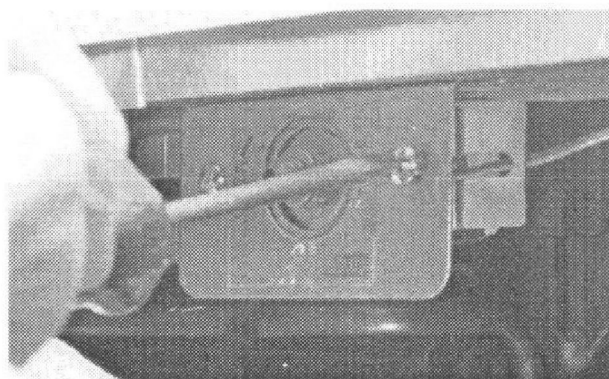
•Note: Disconnect from power supply before removing louvre grill!



For Temperature adjustment, machine louvre grill is to be removed. Grill located under handle-bar.



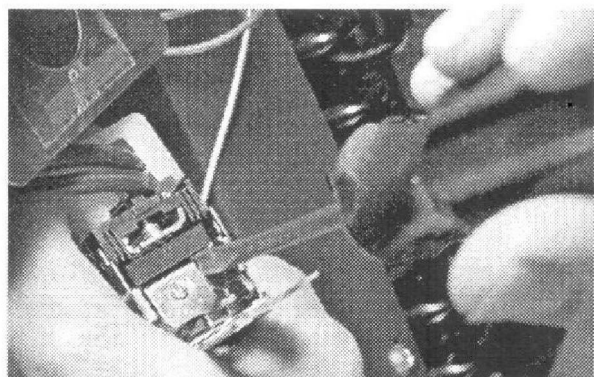
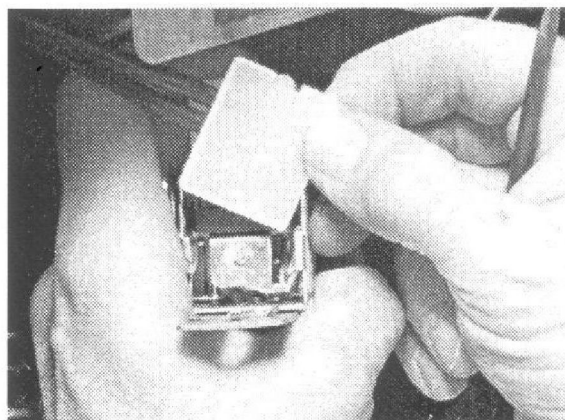
Removal of louvre grill exposes motor and temperature control. Counterclockwise for warmer or clockwise for colder, as necessary. Typical range is 0° to -20° (F)



For further adjustment warmer, remove thermostat control by removing screws retaining control to mounting bracket.



Remove plastic white plastic cover, exposing adjustment screw.



Gently using screwdriver, turn screw clockwise for warmer, not to exceed two (2) full turns. One full turn adjusts approximately 5°. Allow time for system to cycle, before adjusting again...immediate results cannot be expected.